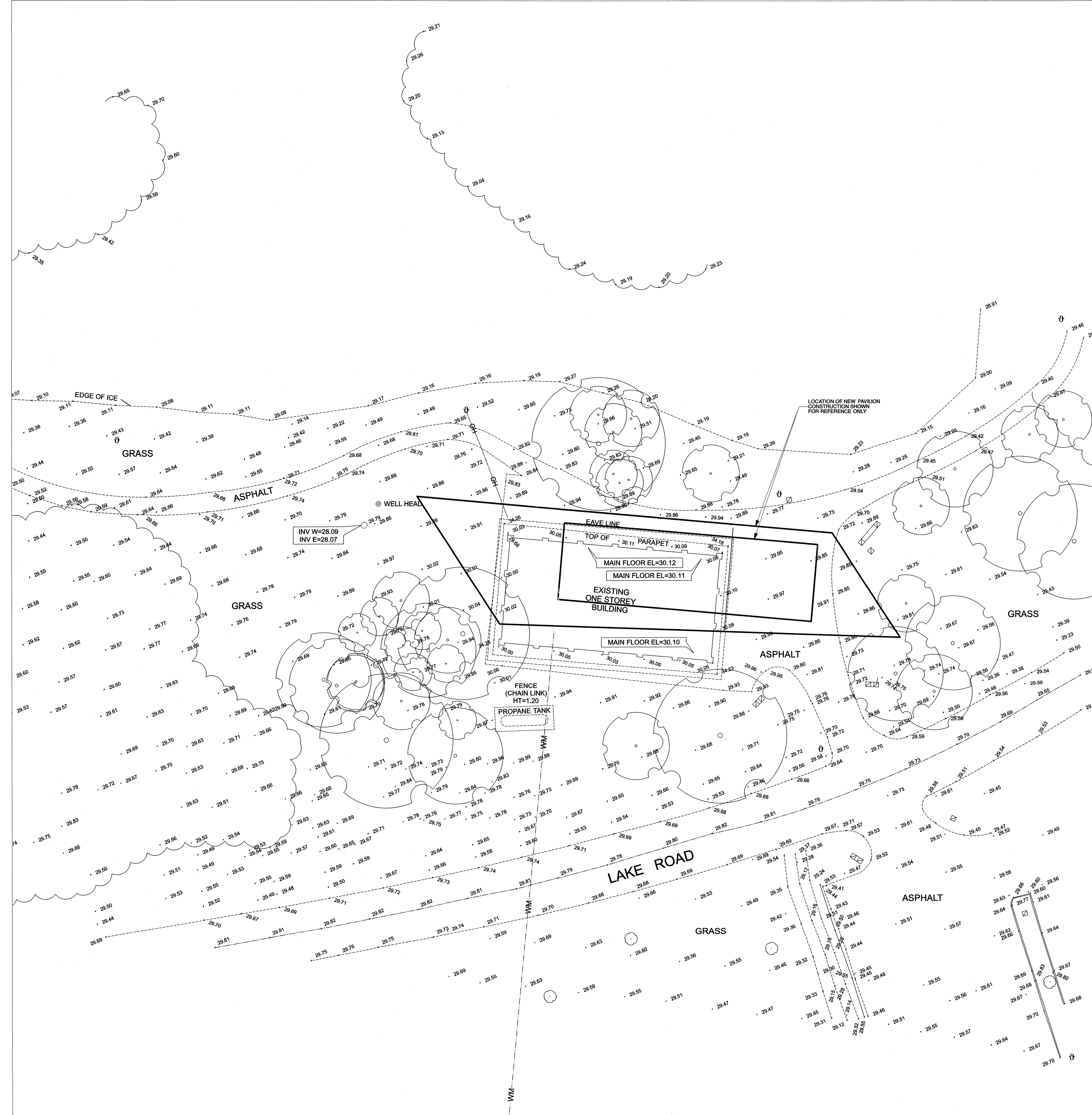
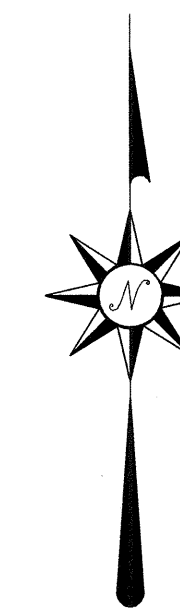


METRIC



THE SURVEY INFORMATION CONTAINED ON THIS DRAWING IS PROVIDED FOR CONTRACTOR INFORMATION ONLY. THE SURVEY DATA WAS OBTAINED BY PHILLIPS AND STEVENS LAND SURVEYORS. IXXI ARCHITECTURE INC. DOES NOT CLAIM AUTHORSHIP AND SHALL NOT BE HELD LIABLE FOR ACCURACY OF SURVEY DATA.

| 5 | YY.MM.DD | - |
|-----|----------|-------------------------|
| 4 | YY.MM.DD | - |
| 3 | YY.MM.DD | - |
| 2 | YY.MM.DD | - |
| 1 | 13.05.10 | ISSUED FOR CONSTRUCTION |
| No. | DATE | REVISION / ISSUANCE |


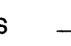

TOPOGRAPHIC SURVEY ST. VITAL DUCK POND PAVILION 190 RIVER ROAD WINNIPEG, MANITOBA

GENERAL NOTES AND SYMBOLS

NOTES:

ALL DISTANCES ARE IN METRES, AND MAY BE CONVERTED TO FEET BY MULTIPLYING BY 3.28084
ELEVATIONS ARE RELATIVE TO CITY OF WINNIPEG BENCHMARK 63-032 AND CAN BE MADE GEODETIC
BY ADDING 200.00m.

CONFIRMATION OF THE EXISTENCE AND LOCATION OF ALL UNDERGROUND STRUCTURES MUST BE
OBTAINED FROM ALL UTILITY PROVIDERS PRIOR TO COMMENCING ANY CONSTRUCTION.
LIMITS OF ASPHALT EDGE WERE PLOTTED FROM AERIAL PHOTOGRAPHY ONLY.

SPOT ELEVATIONS ARE SHOWN THUS 
LAMP STANDARDS ARE SHOWN THUS 
SIGNS ARE SHOWN THUS 

DECIDUOUS TREES ARE SHOWN THUS 

TREE LINES ARE SHOWN THUS 

BUILDINGS ARE SHOWN THUS 


THE INFORMATION PROVIDED WITHIN THIS FILE IS NOT TO BE PROVIDED TO ANY OTHER PERSON FOR ANY PURPOSE AND IS FOR THE EXCLUSIVE USE OF THE RECIPIENT ONLY. THIS DATA IS PROVIDED "AS IS" AND WITHOUT WARRANTY OF ANY KIND. PHILLIPS AND STEVENS MAKES NO REPRESENTATION OR WARRANTY OF ANY KIND AND HEREBY EXPRESSLY DISCLAIMS ALL WARRANTIES, EXPRESS OR IMPLIED, INCLUDING, WITHOUT LIMITATION, IMPLIED WARRANTIES OF MERCHANTABILITY AND FITNESS FOR A PARTICULAR PURPOSE. PHILLIPS AND STEVENS DOES NOT REPRESENT OR WARRANT, GUARANTEE, OR MAKE ANY REPRESENTATION WHATSOEVER REGARDING THE USE, ACCURACY, OR THE RESULTS OF USE, OF THE DATA OR THAT THE DATA WILL BE ERROR FREE. THE ENTIRE RISK AS TO THE USE, AND THE RESULTS OF THE USE, OF THE DATA IS ASSUMED BY THE USER.

LINETYPE LEGEND

CURB AND GUTTERS ARE SHOWN THUS 


EDGE OF ASPHALT ARE SHOWN THUS 

ROAD CENTERLINES ARE SHOWN THUS 

FENCES ARE SHOWN THUS 

TOP OF BANKS ARE SHOWN THUS 

BOTTOM OF BANKS ARE SHOWN THUS 

WATERMAIN LINES ARE SHOWN THUS 

OVERHEAD HYDRO ARE SHOWN THUS 

UTILITIES AND UNDERGROUND STRUCTURES

DISCLAIMER:

LOCATIONS OF UNDERGROUND UTILITIES WERE NOT INVESTIGATED AT THE TIME OF THIS SURVEY. NO GUARANTEE IS GIVEN THAT ALL EXISTING UTILITIES ARE SHOWN OR THAT THE GIVEN LOCATIONS ARE EXACT. ALL UTILITY PROVIDERS MUST BE CONTACTED FOR UP TO DATE CLEARANCES PRIOR TO ANY CONSTRUCTION.

UNDERGROUND SERVICES SUCH AS WATER, SANITARY SEWER AND LAND DRAINAGE SEWER IN THE AREA WERE NOT INVESTIGATED.

Architect

Engineer

Project BID OPPORTUNITY 317 - 2013

ST. VITAL PARK PAVILION

190 River Road

Sheet Title

SURVEY PLAN

Project No. 1243

Date MAY 10, 2013

A0.1